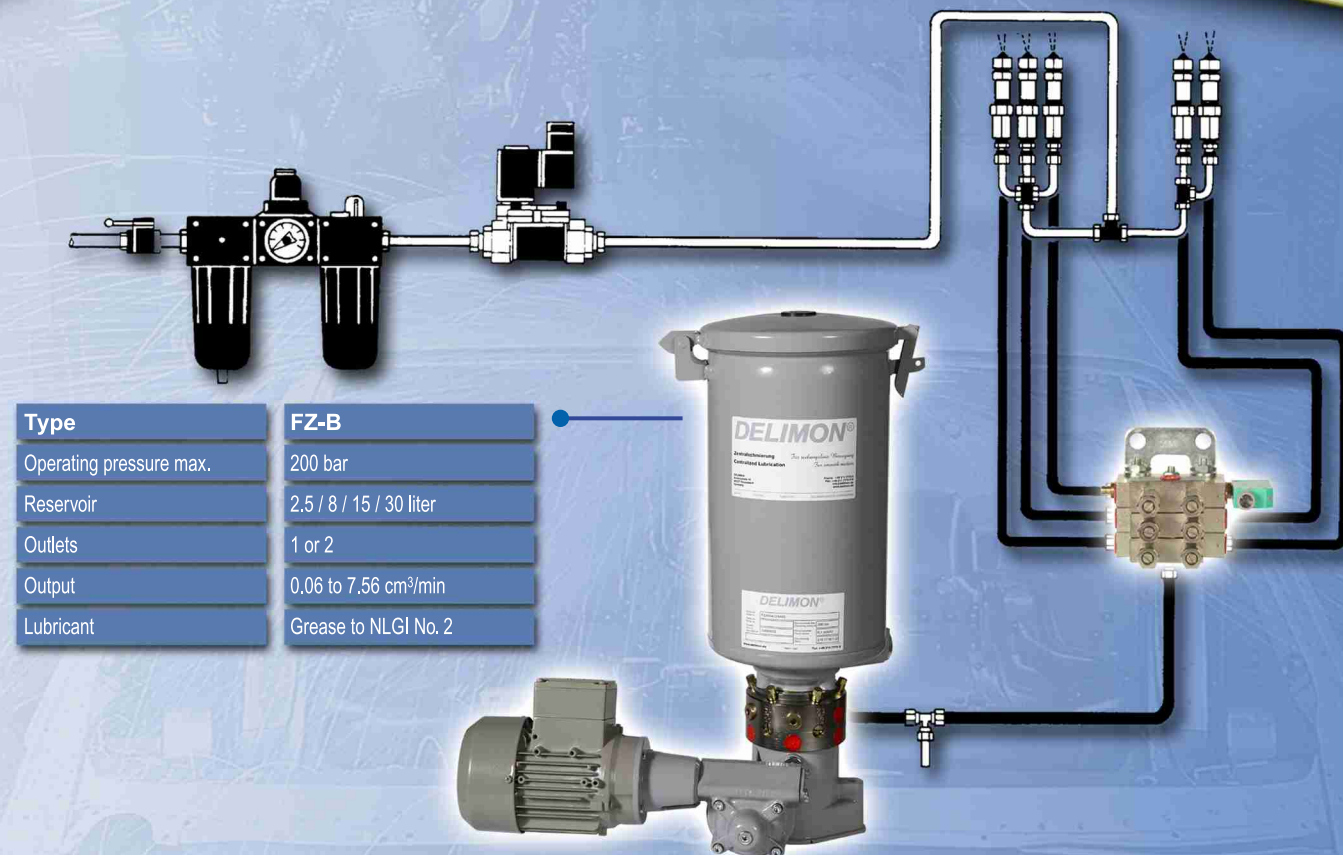


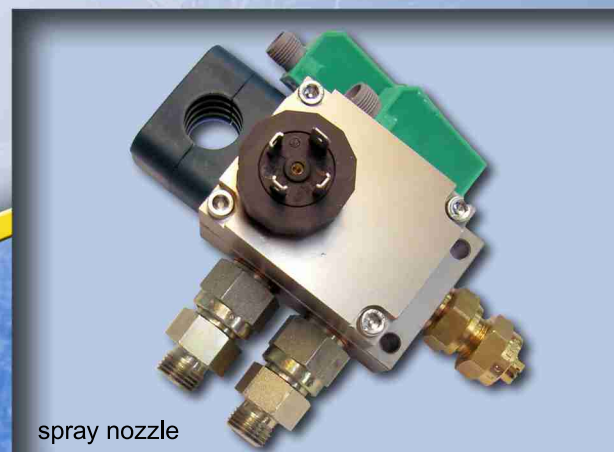
Spray Lubrication System

Oil Recirculation Systems

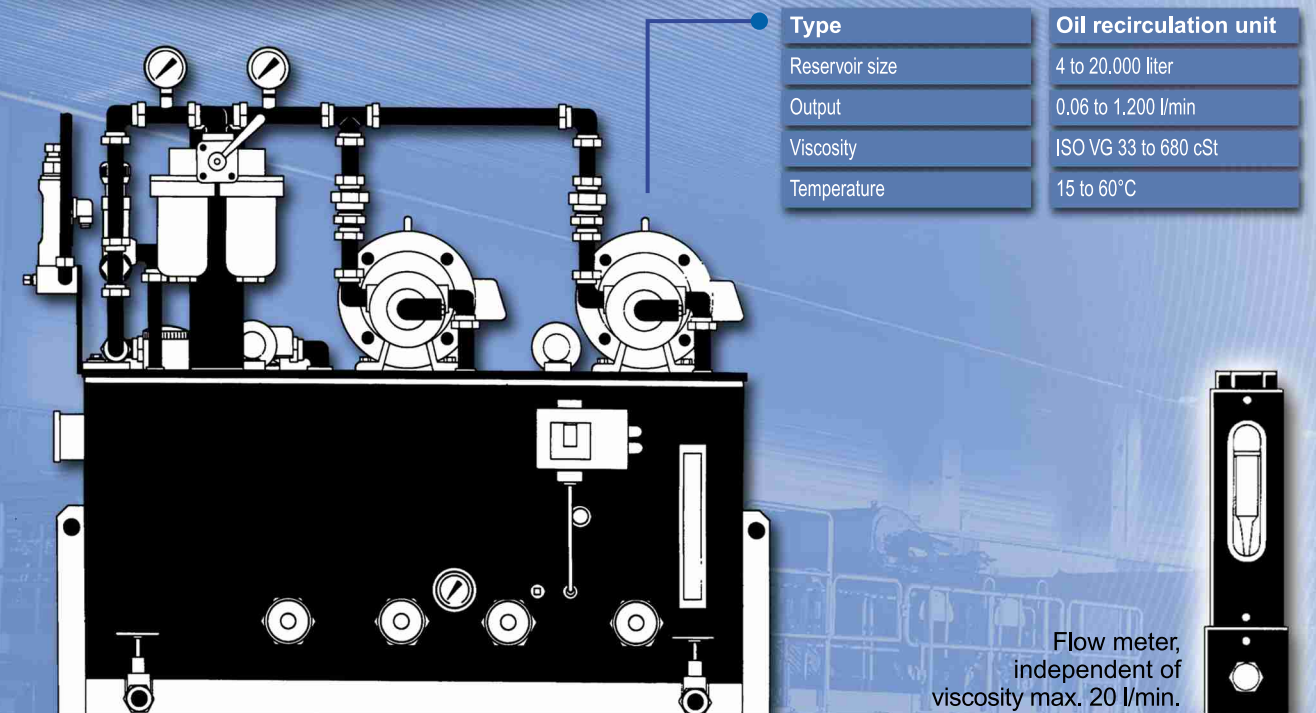
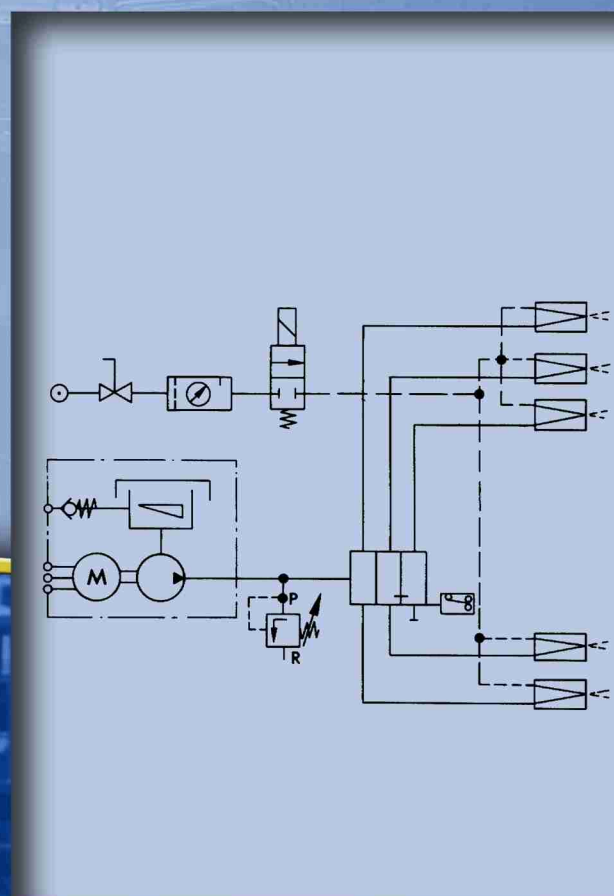


for grease / liquid grease

Via a centralised oiling or greasing system lubricant is metered and fed into spray nozzles and then entrained in the nozzle by the flowing compressed air. The spray pattern desired for the case of requirement is made by means of an omnidirectional or fan jet nozzle insert. Through the spray nozzles one achieves an excellent distribution of the lubricant. Simple nozzle design and rugged construction. Long working life and a minimal maintenance expenditure.



spray nozzle



metering — lubricating — cooling — cleaning

The oil is metered and delivered from the reservoir via a restrictor system or alternatively via a progressive system to the lubrication points from where it flows back into the reservoir again. Suitable to keep bearings at a moderate temperature and to drain contaminations.

