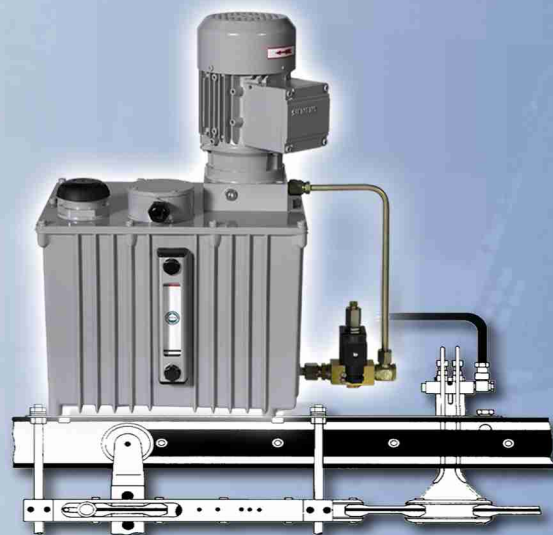


## **Chain conveyor lubrication system WS - E**



### **for oil**

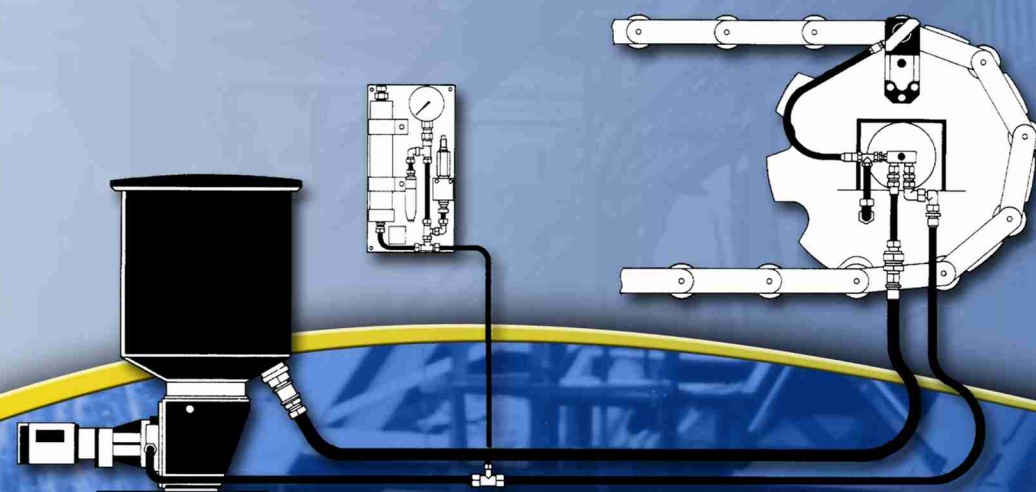
This system is intended for the feeding of chain lubrication points with very small quantities of oil without the use of compressed air. With a WS-E pump it is possible to feed up to 12 different lubrication points of a chain. If it deals with multi-strand systems, it is possible to feed much more lubrication points. The big advantage of the system is the small oil quantity of 0.01 cm<sup>3</sup> and/or 0.025 cm<sup>3</sup> per lubrication point and lubricating cycle as well as the well-aimed spray application without the use of compressed air, e.g. in the car industry. (German registered utility model DGM 7 826 547).

## **Chain conveyor lubrication system RK - C**

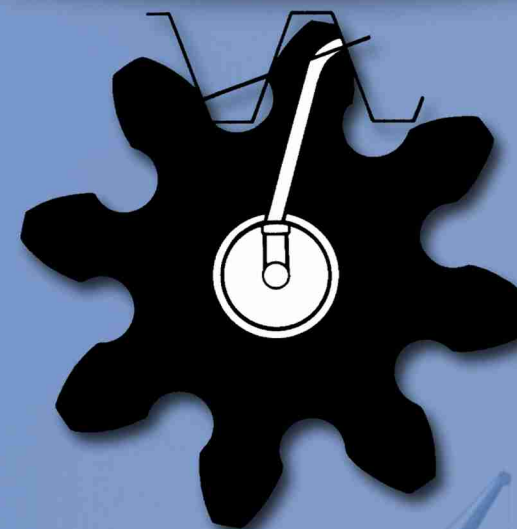
### **for grease / liquid grease**

For the feeding of conveyor facilities provided with lubricating nipples, e. g. apron conveyors or sugar-beet conveyors we have created a lubrication system which ensures a continuous, automatic lubrication without the

use of a great number of moving parts. The lubricating heads are controlled via a rotary slide valve, and they lubricate the bolts at the chain wheel during the reversing phase.



## **Gear wheel lubrication system NV - K**



### **for grease / liquid grease**

With our gear wheel lubrication system NV-K it is possible to apply a perfect lubricant film with great precision onto gear rims. This becomes possible due to the controlled grease supply to the meshing teeth and due to the outlet bores being staggered in height and arranged on the teeth of the NV-K appliance. The introduction of grease into the NV-K appliance is effected through one of our pumps.

## **Crane track lubricator KS - A**

### **for grease / liquid grease**

With this appliance one applies a lubricant film onto both flanks of the crane track which reduces the wear

of track and wheel considerably. The lubricant supply into the KS-A unit is effected through one of our pumps.

