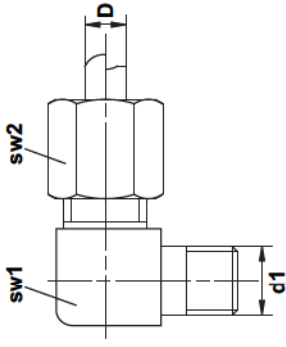


Elbow screw fitting DIN 2353 / ISO 8434-1

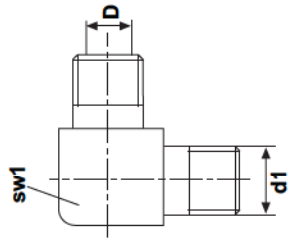


c-item no	item no.	D	d1	sw1	sw2
	104 - 101	4	M 6 x 1 tap	9	10
	104 - 102	4	M 8 x 1 tap	9	10
	104 - 103	4	M 10 x 1 tap	9	10
	104 - 104	4	R 1/8 BSP tap	9	10
	106 - 101	6	M 6 x 1 tap	11	12
	106 - 101 - VA*	6	M 6 x 1 tap	11	12
	106 - 102	6	M 8 x 1 tap	11	12
	106 - 102 - VA*	6	M 8 x 1 tap	11	12
	106 - 103	6	M 10 x 1 tap	11	12
	106 - 103 - VA*	6	M 10 x 1 tap	11	12
	106 - 104	6	R 1/8 BSP tap	11	12
	106 - 104 - VA*	6	R 1/8 BSP tap	11	12
	106 - 105 - L	6	R 1/4 BSP tap	12	14

Material: steel, galvanized surface

* Material: stainless steel 1.4571/316ti

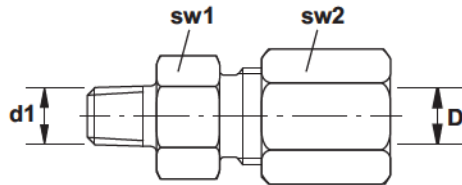
Elbow connectors screw type / body



c.-item no	item no.	D	d1	sw1
	104 - 131	4	M 6 x 1 tap	9
	104 - 132	4	M 8 x 1 tap	9
	104 - 133	4	M 10 x 1 tap	11
	104 - 134	4	R 1/8 BSP tap	11
	106 - 131	6	M 6 x 1 tap	11
	106 - 132	6	M 8 x 1 tap	11
	106 - 133	6	M 10 x 1 tap	11
	106 - 134	6	R 1/8 BSP tap	11

Material: steel, galvanized surface

Straight screwel coupling

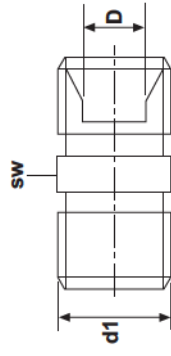


c.-item no	item no.	D	d1	sw1	sw2
	104 - 001	4	M 6 x 1 tap	9	10
	104 - 002	4	M 8 x 1 tap	9	10
	104 - 003	4	M 10 x 1 tap	11	10
	104 - 004	4	R 1/8 BSP tap	11	10
	106 - 001	6	M 6 x 1 tap	11	12
	106 - 001 - VA*	6	M 6 x 1 tap	11	12
	106 - 002	6	M 8 x 1 tap	11	12
	106 - 002 - VA*	6	M 8 x 1 tap	11	12
	106 - 003	6	M 10 x 1 tap	11	12
	106 - 003 - VA *	6	M 10 x 1 tap	11	12
	106 - 004	6	R 1/8 BSP tap	11	12
	106 - 004 - VA*	6	R 1/8 BSP tap	11	12
	106 - 005 - L	6	R 1/4 BSP tap	12	14
	108 - 001	8	M 6 x 1 tap	14	14
	108 - 002	8	M 8 x 1 tap	14	14
	108 - 003	8	M 10 x 1 tap	14	14
	108 - 004	8	R 1/8 BSP tap	14	14

Material: steel, galvanized surface

* Material: stainless steel 1.4571/316ti

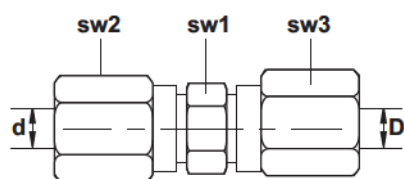
Straight connector type / body



c.-item no	item no.	d1	D	sw
	104 - 031	M 6 x 1 tap	4	9
	104 - 032	M 8 x 1 tap	4	9
	104 - 033	M 10 x 1 tap	4	11
	104 - 034	R 1/8 BSP tap	4	11
	106 - 031	M 6 x 1 tap	6	11
	106 - 032	M 8 x 1 tap	6	11
	106 - 033	M 10 x 1 tap	6	11
	106 - 034	R 1/8 BSP tap	6	11

Material: steel, galvanized surface

Connector

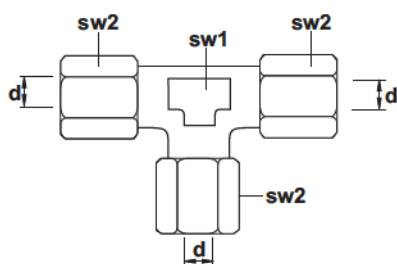


c.-item no	item no.	d	D	sw1	sw2	sw3
	104 - 000	4	4	9	10	10
	104 - 000 - VA *	4	4	9	10	10
	104 - 000 - 6	4	6	11	10	12
	106 - 000	6	6	11	12	12
	106 - 000 - VA *	6	6	11	12	12
	106 - 000 - 8	6	8	12	12	14
	106 - 000 - 10 - L	6	10	17	14	19
	108 - 000	8	8	12	14	14
	108 - 000 - L	8	8	14	17	17
	108 - 000 - VA - L *	8	8	14	17	17
	110 - 000 - L	10	10	17	19	19
	110 - 000 - VA - L *	10	10	17	19	19

Material: steel, galvanized surface

* Material: stainless steel 1.4571/316ti

Equal tee



c.-item no	item no.	d	sw1	sw2
	104 - 300	4	9	10
	106 - 300	6	11	12
	106 - 300 - L	6	12	14
	108 - 300	8	12	14

Material: steel, galvanized surface

Nonreturn valve / body

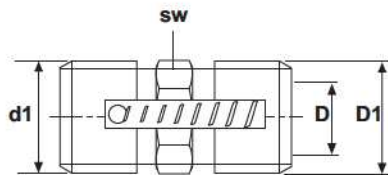


Abb. 1



Abb. 2



Abb. 3

c.-item no	item no.	d1	D	D1	sw
	106 - 033 - RVB Abb. 1	M 10 x 1	6	M 10 x 1	11
	106 - 033 - RV L * Abb. 2	M 10 x 1	6	M 10 x 1	11
	106 - 033 - RVV Abb. 3	M 10 x 1 tap	6	M 10 x 1	11
	106 - 033 - RVV - VA ** Abb. 3	M 10 x 1 tap	6	M 10 x 1	11

Material: steel, galvanized surface

* black

** Material: stainless steel 1.4571/316ti

Nonreturn valve complete with coupling nut and cutting ring

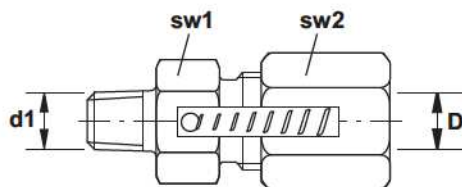


Abb. 1



Abb. 2



Abb. 3

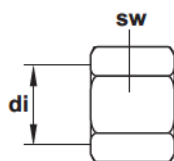
c.-item no	item no.	d1	D	sw1	sw2
	106 - 003 - RVB Abb. 1	M 10 x 1	6	11	12
	106 - 003 - RV L * Abb. 2	M 10 x 1	6	11	12
	106 - 003 - RVV Abb. 3	M 10 x 1 tap	6	11	12
	106 - 003 - RVV - VA ** Abb. 3	M 10 x 1 tap	6	11	12

Material: steel, galvanized surface

* black

** Material: stainless steel 1.4571/316ti

Coupling nut

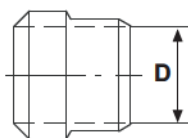


c.-item no	item no.	di	sw
	104 - 200	4	10
	106 - 200	6	12
	106 - 200 - VA*	6	12
	106 - 200 - SW black	6	12
	108 - 200	8	14
	110 - 200 - L	10	19

Material: steel, galvanized surface

* Material: stainless steel 1.4571 / 316ti

Cutting ring

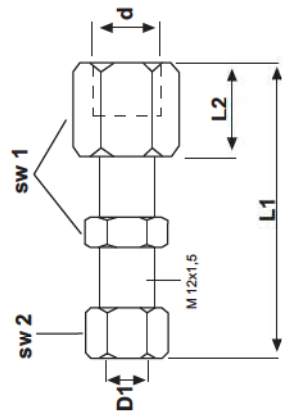


c.-item no	item no.	D
	104 - 210	4
	106 - 210	6
	106 - 210 - VA*	6
	108 - 210	8
	110 - 210 - LL	10
	110 - 210 - L	10

Material: steel, galvanized surface

* Material: stainless steel 1.4571/316ti

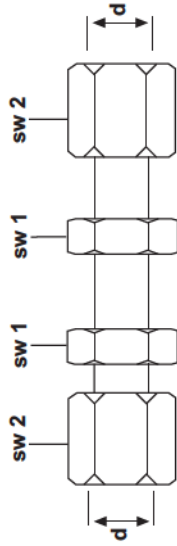
Bulkhead



C-item no	item no.	D1	d	L1	L2	SW1	SW2
	106 - 241 - L	6	M 6 x 1	33	5	17	14
	106 - 243 - L	6	M 10 x 1	66	20	17	14

Material: steel, galvanized surface

Bulkhead straight

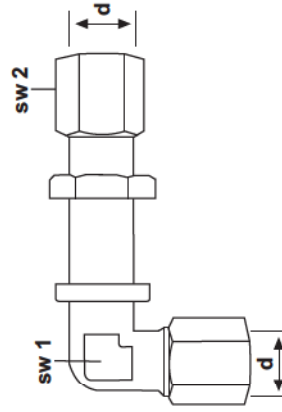


c.-item no	item no.	d	sw1	sw2
	106 - 221 - L	6	17	14
	106 - 221 - L - VA *	6	17	14
	108 - 221 - L	8	17	17

Material: steel, galvanized surface

*Material: stainless steel 1.4571/316ti

Bulkhead elbow

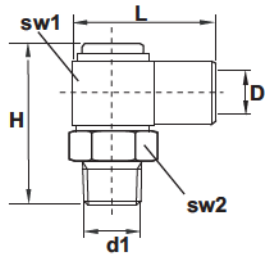


c.-item no	item no.	d	sw1	sw2
	106 - 231 - L	6	12	14
	106 - 231 - L - VA *	6	12	14
	108 - 231 - L	8	14	17

Material: steel, galvanized surface

*Material: stainless steel 1.4571/316ti

Banjo fitting freely movable, 90° angle



c.-item no	item no.	D	d1	sw1	sw2	H	L	tube Ø
	104 - 172	M 8 x 1	M 8 x 1 tap	15	14	30	26,5	4
	104 - 173	M 8 x 1	M 10 x 1 tap	15	14	30	26,5	4
	106 - 171*	M 10 x 1	M 6 x 1 tap	15	14	30	29	6
	106 - 172	M 10 x 1	M 8 x 1 tap	15	14	30	29	6
	106 - 173	M 10 x 1	M 10 x 1 tap	15	14	30	29	6
	106 - 174	M 10 x 1	R 1/8 BSP tap	15	14	30	29	6

Material: brass

*Material: brass, steel

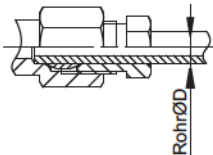


Abb.1

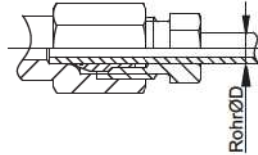
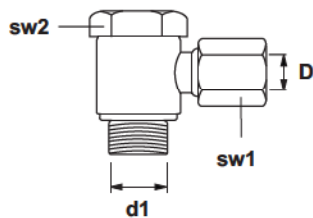


Abb.2

It's also possible to connect a lubrication line directly to a swivel joint.

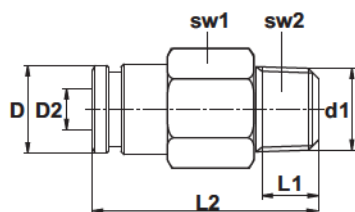
Swivel union



c.-item no	item no.	D	d1	sw1	sw2
	106 - 123	6	M 10 x 1	12	14
	106 - 124	6	R 1/8	12	14

Material: steel, galvanized surface

Push-in straight connector (for plastic tube)

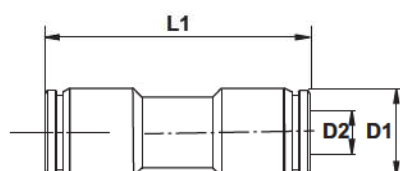


c.-item no	item no.	D	D1	D2	sw1	sw2	L1	L2
	104 - 051	9	M 6 x 1 tap	4	10	3	7,5	18,5
	104 - 052	9	M 8 x 1 tap	4	10	2,5	8	23
	104 - 053	9	M 10 x 1 tap	4	10	3	8	20
	104 - 054	9	R 1/8 BSP tap	4	11	3	8	20
	104 - 054 - NPT	9	1/8 NPT	4	11	3	8	20
	104 - 055 - UNF	9	1/4 - 28 UNF	4	11	3	8	20
	106 - 051	12	M 6 x 1 tap	6	12	3	7,5	21,5
	106 - 052	12	M 8 x 1 tap	6	12	2,5	8	25,5
	106 - 053	12	M 10 x 1 tap	6	12	4	8	25,5
	106 - 054	12	R 1/8 BSP tap	6	12	4	8	22
	106 - 054 - NPT	12	1/8 NPT	6	12	3	8,5	21,5
	106 - 055 - UNF	12	1/4 - 28 UNF	6	12	3	6	23,5

Material: plated brass

operating pressure 80 bar

Push-in connector (for plastic tube)

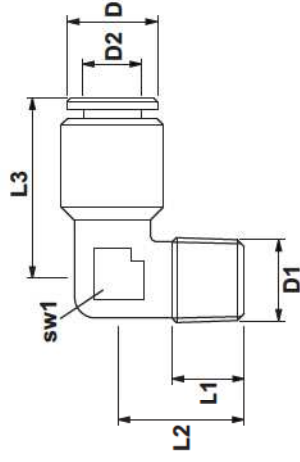


c.-item no	item no.	D1	D2	L1
	104 - 110	9	4	28
	106 - 110	12	6	31,5

Material: plated brass

operating pressure 80 bar

Push-in elbow-connector (for plastic tube)

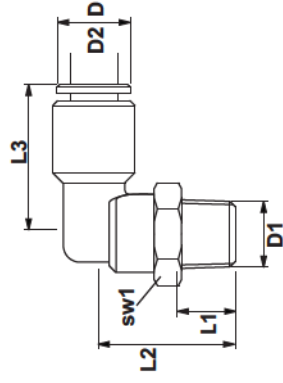


c.-item no	item no.	D	D1	D2	sw1	L1	L2	L3
	104 - 151	9	M 6 x 1 tap	4	10	7,5	16,5	20
	104 - 152	9	M 8 x 1 tap	4	10	8	16,5	20
	104 - 153	9	M 10 x 1 tap	4	10	8	17	20
	104 - 154	9	R 1/8 BSP tap	4	10	8	15	20
	104 - 154 - NPT	9	1/8 NPT	4	10	8	17	20
	104 - 155 - UNF	9	1/4 - 28 UNF	4	10	8	17	20
	106 - 151	12	M 6 x 1 tap	6	10	7,5	16,5	21
	106 - 152	12	M 8 x 1 tap	6	10	8	16,5	21
	106 - 153	12	M 10 x 1 tap	6	10	8	17	21
	106 - 154	12	R 1/8 BSP tap	6	10	8	15	21
	106 - 154 - NPT	12	1/8 NPT	6	10	8	16	21
	106 - 155 - UNF	12	1/4 - 28 UNF	6	10	7	15	21

Material: plated brass

operating pressure 80 bar

Push-in swivel freely movable connector 90° (for plastic tube)

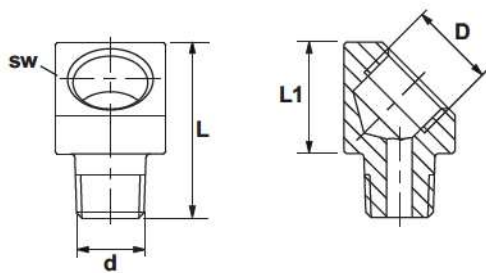


c.-item no	item no.	D	D1	D2	sw1	L1	L2	L3
	104 - 111	9	M 6 x 1 tap	4	13	8	20,5	20
	104 - 112	9	M 8 x 1 tap	4	13	8	20,5	20
	104 - 113	9	M 10 x 1 tap	4	13	8	21,5	20
	104 - 114	9	R 1/8 BSP tap	4	13	7,5	20	20
	104 - 114 - NPT	9	1/8 NPT	4	13	8,5	21,5	
	104 - 115 - UNF	9	1/4 - 28 UNF	4	13	7	21	
	106 - 111	12	M 6 x 1 tap	6	13	8	20,5	21,5
	106 - 112	12	M 8 x 1 tap	6	13	8	20,5	21,5
	106 - 113	12	M 10 x 1 tap	6	13	8	21,5	21,5
	106 - 114	12	R 1/8 BSP tap	6	13	7,5	20,5	21,5
	106 - 114 - NPT	13	1/8 NPT	6	13	8,5	21,5	
	106 - 115 - UNF	13	1/4 - 28 UNF	6	13	7	21	

Material: plated brass

pression de service 80 bar

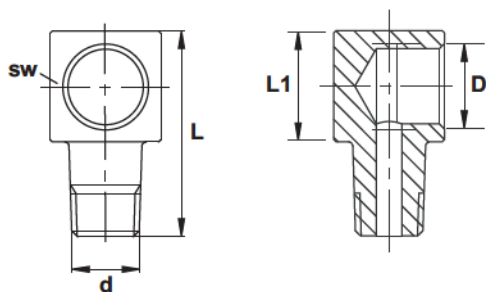
Adapter 45°



c.-item no	item no.	D	d	sw	L	L1
	100 - 822	M 8 x 1	M 8 x 1 tap	13	23	13
	100 - 823	M 8 x 1	M 10 x 1 tap	13	3	13
	100 - 833	M 10 x 1	M 10 x 1 tap	13	23	13
	100 - 844	Rp 1/8 BSP	R 1/8 BSP tap	13	23	13
	100 - 855	Rp 1/4 BSP	R 1/4 BSP tab	17	33	18

Material: steel, galvanized surface

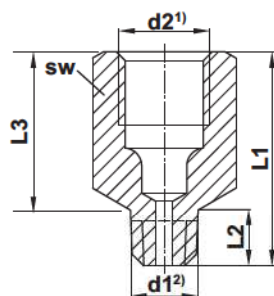
Adapter 90°



c.-item no	item no.	D	d	sw	L	L1
	100 - 711	M 6 x 1	M 6 x 1 tap	12	23	13
	100 - 721	M 8 x 1	M 6 x 1 tap	12	23	13
	100 - 722	M 8 x 1	M 8 x 1 tap	12	23	13
	100 - 723	M 8 x 1	M 10 x 1 tap	12	23	13
	100 - 733	M 10 x 1	M 10 x 1 tap	13	23	13
	100 - 744	Rp 1/8 - BSP	R 1/8 - BSP tap	13	23	13
	100 - 724	M 8 x 1	R 1/8 - BSP tap	12	23	13
	100 - 755	Rp 1/4 BSP	R 1/4 - BSP tap	17	33	18

Material: steel, galvanized surface

Adapter, extension piece



- 1) Adapter with cut for pipe union without soldering
- 2) Spigot screw thread of DIN 158 tap short, res. of DIN 2999

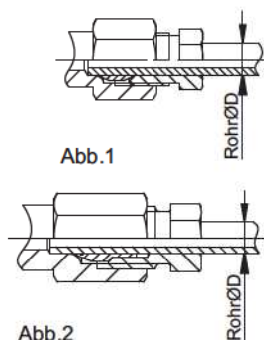


Abb.2

It's also possible to connect a lubrication line directly to an extension.

Material: steel, galvanized surface
* Material: stainless steel 1.4571/316ti



In the table below you will find our metric designs. The inch models are on the next page (p.19)

c.-item no	item no.	Abb.	d1	d2	L1	L2	L3	sw	tube Ø
	100 - 120	1	M 6 x 1 tap	M 8 x 1	18	8	10	11	4
	100 - 130	1	M 8 x 1 tap	M 8 x 1	18	8	10	11	4
	100 - 132	1	M 8 x 1 tap	M 8 x 1	32	22	10	11	4
	100 - 135	1	M 8 x 1 tap	M 8 x 1	62,5	52,5	10	11	4
	100 - 137	2	M 8 x 1 tap	M 10 x 1	23	12	11	13	6
	100 - 140	1	M 10 x 1 tap	M 8 x 1	18	8	10	11	4
	100 - 142	2	M 10 x 1 tap	M 10 x 1	18	7	11	13	6
	100 - 141	2	M 10 x 1 tap	M 10 x 1	23	12	11	13	6
	100 - 141 - VA*	2	M 10 x 1 tap	M 10 x 1	23	12	11	13	6
	100 - 145	2	M 10 x 1 tap	M 10 x 1	35	24	11	13	6
	100 - 143	2	M 10 x 1 tap	M 10 x 1	40	29	11	13	6
	100 - 146	2	M 10 x 1 tap	M 10 x 1	50	39	11	13	6
	100 - 151	2	R 1/8 BSP tap	M 10 x 1	18	7	11	13	6
	100 - 155	2	R 1/8 BSP tap	M 8 x 1	18	7	11	13	4
	100 - 144	2	R 1/4 BSP tap	M 10 x 1	20	9	11	17	6

Material: steel, galvanized surface
* Material: stainless steel 1.4571/316ti



Adapter, extension piece

The following table shows our imperial (inch) designs. The metric models are on the previous page (p. 18)

c.-item no	item no.	Abb.	d1	d2	L1	L2	L3	sw	tube Ø
	100 - 151	2	R 1/8 BSP tap	M 10 x 1	18	7	11	13	6
	100 - 152	-	R 1/8 BSP tap	Rp 1/8 BSP	18	7	11	13	-
	100 - 155	2	R 1/8 BSP tap	M 8 x 1	18	7	11	13	4
	100 - 148	-	R 1/8 BSP tap	Rp 1/8 BSP	23	12	11	13	-
	100 - 148 - VA*	-	R 1/8 BSP tap	Rp 1/8 BSP	23	12	11	13	-
	100 - 156	-	R 1/8 BSP tap	Rp 1/8 BSP	30	18	12	13	-
	100 - 149	-	R 1/8 BSP tap	Rp 1/8 BSP	35	23	12	13	-
	100 - 154	-	R 1/8 BSP tap	Rp 1/8 BSP	45	33	12	13	-
	100 - 153	-	R 1/8 BSP tap	Rp 1/8 BSP	50	38	12	13	-
	100 - 144	2	R 1/4 BSP tap	M 10 x 1	20	9	11	17	6
	100 - 147	-	R 1/4 BSP tap	Rp 1/8 BSP	20	9	11	17	-
	100 - 162	-	R 1/8 BSP tap	Rp 1/4 BSP	22	8	14	17	-
	100 - 160	-	R 1/4 BSP tap	Rp 3/8 BSP	27	11	16	22	-
	100 - 161	-	R 1/4 BSP tab	Rp 1/4 BSP	25	17	8	17	-
	100 - 186	-	R 1/4 BSP tab	Rp 1/4 BSP	85	71	14	17	-

Adapter - extension piece with NPT thread

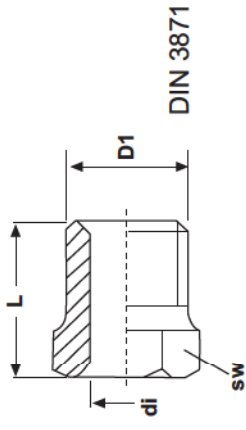
c.-item no	item no.	Abb.	d1	d2	L1	L2	L3	sw	tube Ø
	100 - 182	-	1/8 NPT	1/8 NPT	20	9	11	1/2	-
	100 - 183	-	1/8 NPT	1/8 NPT	30	18	12	1/2	-
	100 - 167	-	1/4 - 28 UNF	1/8 BSP	23	12	11	1/2	-

Material: steel, galvanized surface

* Material: stainless steel 1.4571/316ti



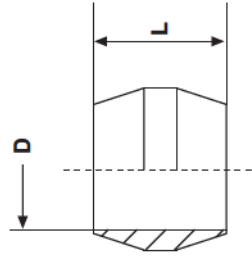
Socket union for double cone olive



c.-item no	item no.	D1	di	sw	L
	104 - 205	M 8 x 1	4	8	12
	106 - 205	M 10 x 1	6	10	14

Material: steel, galvanized surface

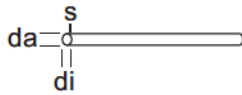
Double cone olive



c.-item no	item no.	D	L
	104 - 215	4	5,5
	106 - 215	6	7

Material: brass

Plastic tube semi-rigid PA 12 HL



DIN 73378 + Cetop



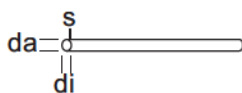
c.-item no	item no.	item	da	s	di	lengthens
	100 - 009 - 25	6 x 1,5 *	6	1,5	3,0	25
	100 - 004	6 x 1,5 **	6	1,5	3,0	100
	100 - 003	6 x 1,5 empty	6	1,5	3,0	100
	100 - 003 - 25	6 x 1,5 empty	6	1,5	3,0	25

Pressure: approx. 1291 PSI / 9 MPA / 89 bar operating pressure

* With grease NLGI quality grade 2 filled

** With low viscosity grease NLGI quality grade 000 filled

Plastic tube flexibel PA 12 PHL



DIN 73378 + Cetop

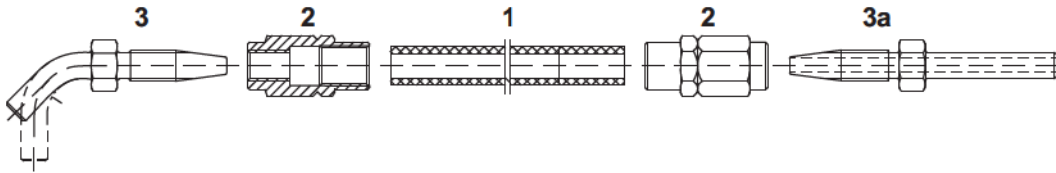


c.-item no	item no.	color	item	da	s	di	lengthens
	100 - 005	black	4 x 0,85 *	4	0,85	2,3	50
	100 - 006	black	4 x 0,85 empty	4	0,85	2,3	50
	100 - 006 - T	tranz- parent	4 x 0,85 empty	4	0,85	2,3	50

Pressure: approx. 580 PSI / 4 MPA / 36 bar / operating pressure

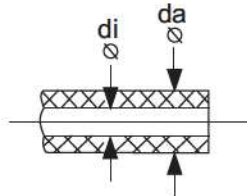
* With low viscosity grease NLGI quality grade 000 filled

High pressure hose 600-840 bar



- 1 High pressure hose
- 2 Screw sleeve
- 3 Hose stud 90° or 45°
- 3a Hose stud straight

High pressure hose 600-840 bar



Technical information

di	da	item no.	packing unit	miscellaneous
4,0	8,6	100-001	50m coil*	with Fett Kl. 2 filled, NLGI 2
4,0	8,6	100-002	50m coil*	empty
6,3	11,3	100-011	100m coil*	with Fett Kl. 2 filled, NLGI 2
6,3	11,3	100-012	100m coil*	empty

	100-001 / 100-002		100-011 / 100-012	
	inner tube	casing	inner tube	casing
material	Termopl. Polyamid 6	Termopl. Polyurethan mikrobenstabilisiert	Termopl. Polyamid 12	Termopl. Polyurethan, mikrobenstabilisiert
tear strength	DIN EN ISO 527 > 30N/mm ²	> 18N/mm ²	> 38N/mm ²	> 20N/mm ²
elongation at break	DIN EN ISO 527 > 50%	> 380%	> 250%	> 320%
hardness shore	DIN EN ISO 868 D 60 ± 3	A 88 ± 3	D 61 ± 3	A 92 ± 3
temperatur using limit	-30°C till 80°C If medium to be pumped "grease with corrosion protection additives": max. 60°C			
cracking pressure	DIN EN ISO 1402 20°C >800bar, 84 MPa, 12184 psi, 60°C >450 bar Permissible bending radius for 20°C >20 mm			

Sizes and tolerances

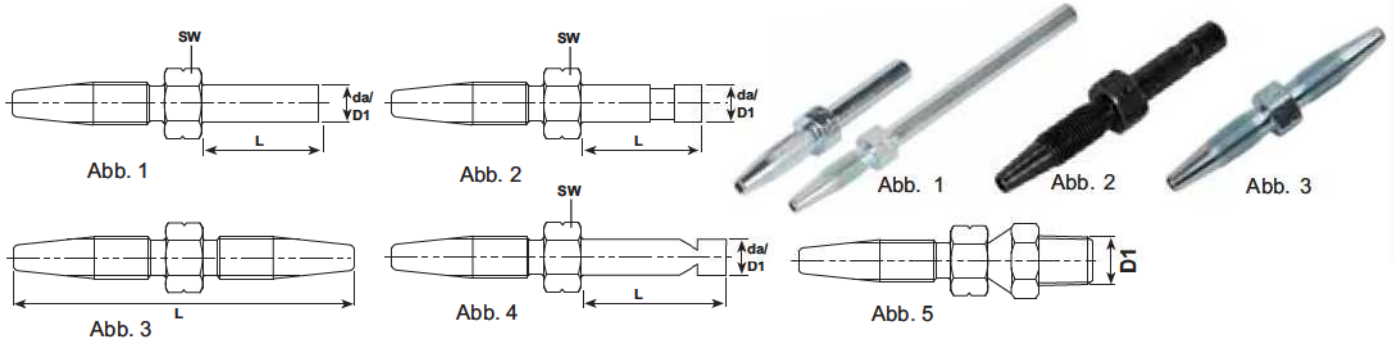
nominal size	4,0 x 8,6 mm d	6,3 x 11,3 mm
inner diameter	3,90 - 4,10 mm	6,2 - 6,5 mm
external diameter	8,50 x 8,75 mm	11,1 - 11,5 mm
wall thickness eccentricity	max. 0,40 mm	max. 0,35 mm

Colour

inner tube	natural	glue	green-transparent
casing	black	print	white
cable armour	white		

*For delivery 5% short lengths are allowed.

Hose stud straight with and without claw groove



c.-item no	item no.	Abb.	da/D1	L	sw
------------	----------	------	-------	---	----

For assembling high pressure hose $\varnothing 4,1 \times 8,75$

	100 - 054 - 4	1	4	20	10
	100 - 054	1	6	20	10
	100 - 055	1	6	24	10
	100 - 051	1	6	30	10
	100 - 091	1	6	65,5	10
	100 - 051 - 8	1	8	30	10
	100 - 054 - NUT	2	6	20	10
	100 - 051 - NUT	2	6	30	10
	100 - 055 - NUT - V	4	6	24	10
	100 - 054 - NUT - SW black	2	6	21,5	10
	100 - 051 - VA *	1	6	30	10
	100 - 061 connector	3	6	21,5	10
	100 - 051 - 1	5	1/8 npt	25	7/16"

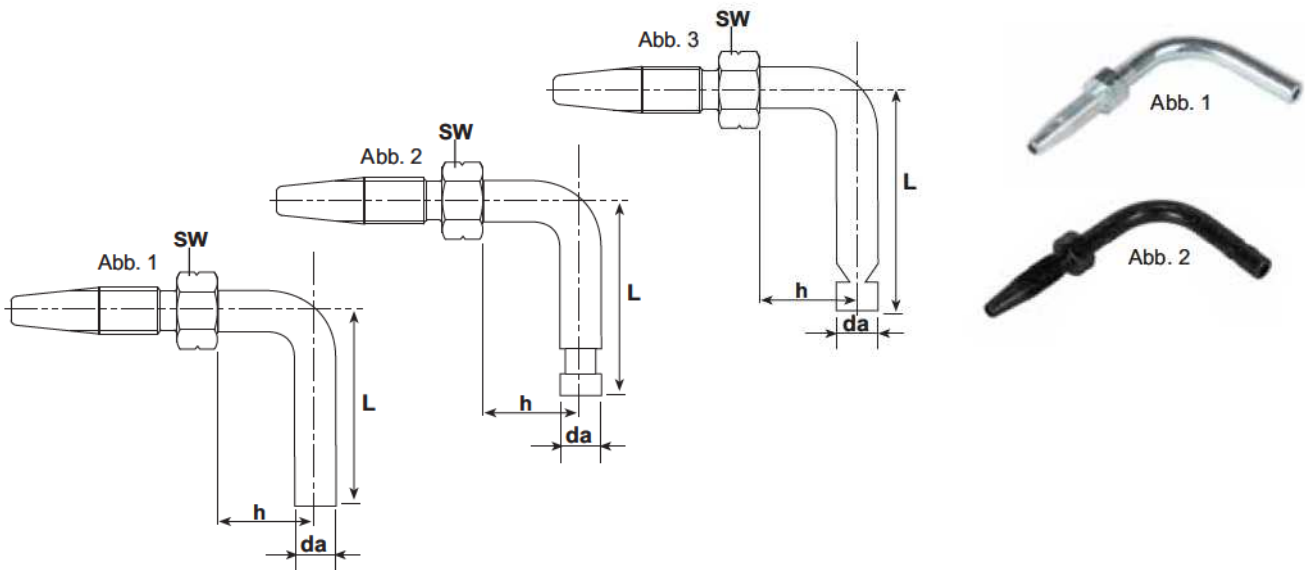
High pressure hose $\varnothing 6,35 \times 11,3$

	100 - 064	1	6	20	12
	100 - 064 - NUT	2	6	20	12
	100 - 064 - VA *	1	6	20	12
	100 - 074	1	8	20	12
	100 - 074 - VA *	1	8	20	12
	100 - 081	1	10	30	12

Material: steel, galvanized surface

*Material: stainless steel 1.4571/316ti

Hose stud with and without claw groove 90°



c.-item no	item no.	Abb.	da	h	L	sw
------------	----------	------	----	---	---	----

High pressure hose Ø 4,1 x 8,75

	100 - 059 - 4	1	4	14	30	10
	100 - 052	1	6	13	21	10
	100 - 059	1	6	14	33	10
	100 - 059 - NUT - V	3	6	14	33	10
	100 - 062	1	6	17	29	10
	100 - 053	1	6	28	37	10
	100 - 053 - VA *	1	6	28	37	10
	100 - 053 - NUT	2	6	28	37	10
	100 - 053 - NUT - SW black	2	6	28	37	10
	100 - 056	1	6	28	53	10
	100 - 056 - NUT	2	6	28	53	10
	100 - 056 - NUT - SW black	2	6	28	53	10

High pressure hose Ø 6,35 x 11,3

	100 - 063	1	6	22	45	12
	100 - 073	1	8	23	36	12
	100 - 073 - VA *	1	8	23	36	12
	100 - 083	1	10	23	36	12

Material: steel, galvanized surface

*Material: stainless steel 1.4571/316ti

Hose stud with and without claw groove 45°

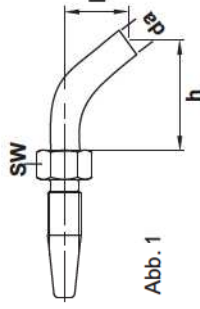


Abb. 1

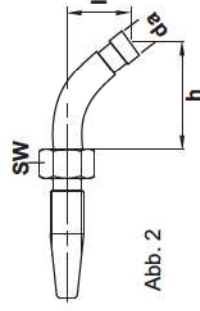


Abb. 2



Abb. 1

c.-item no	item no.	Abb.	da	h	l	sw
	100 - 057	1	6	24	15	10
	100 - 057 - NUT	2	6	24	15	10
	100 - 058	1	6	35	25	10
	100 - 058 - VA*	1	6	35	25	10
	100 - 058 - NUT	2	6	35	25	10
	100 - 058 - NUT - SW black	2	6	35	25	10

Hose stud for assembling high pressure hose $\varnothing 4,1 \times 8,75$

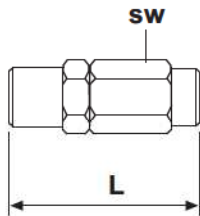
	100 - 068	1	6	35	25	12
	100 - 078	1	8	35	25	12

Hose stud for assembling high pressure hose $\varnothing 6,35 \times 11,3$

Material: steel, galvanized surface

*Material: stainless steel 1.4571/316ti

Screw sleeve



c.-item no	item no.	L	sw
------------	----------	---	----

High pressure hose \varnothing 4,1 x 8,75

	100 - 050	28	12
	100 - 050 - SW black	28	12
	100 - 050 - VA *	28	12

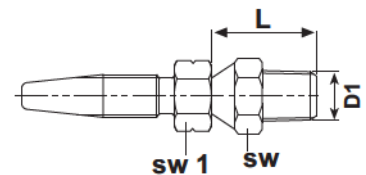
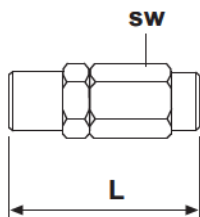
High pressure hose \varnothing 6,35 x 11,3

	100 - 060	35,8	17
	100 - 060 - VA *	35,8	17

Material: steel, galvanized surface

*Material: stainless steel 1.4571/316ti

Screw sleeve with hose stud 1/8 NPT



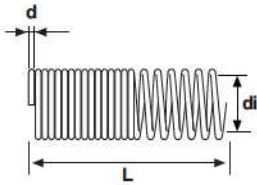
c.-item no	item no.	L	sw	sw1	D1
------------	----------	---	----	-----	----

High pressure hose \varnothing 4,1 x 8,75

	100 - 050 - 1 screw sleeve	26	1/2		
	100 - 051 - 1 hose stud	25	1/2	7/16	1/8 NPT

Material: steel galvanised

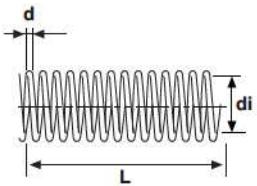
Spring coil short stainless steel 1.4301/304



c.-item no	item no.	L	di	d
	100 - 045 - VA	200	12,9	1,5

* Material: stainless steel 1.4301/304

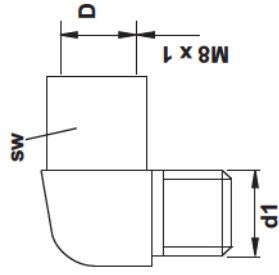
Spring coil long stainless steel 1.4301/304



c.-item no	item no.	L	di	d
	100 - 046 - VA	2000	10,6	1,2
	100 - 047 - VA	5000	10,6	1,2

* Material: stainless steel 1.4301/304

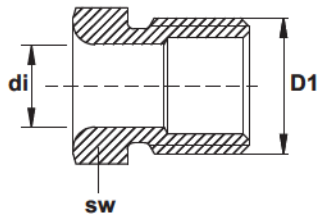
Elbows with tapered thread



c.-item no	item no.	D	d1	sw
	104 - 121	4	M 6 x 1 tap	11
	104 - 122	4	M 8 x 1 tap	11
	104 - 123	4	M 10 x 1 tap	11

Material: brass

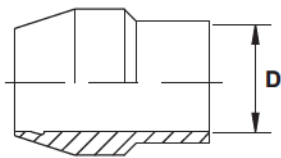
Socket unions for tapered sleeves



c.-item no	item no.	D1	di	sw
	104 - 220	M 8 x 1	4	8
	106 - 220	10 x 1	6	10
	110 - 220	M 16 x 1,5	10	17

Material: brass

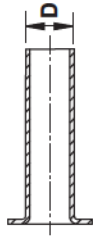
Tapered sleeves



c.-item no	item no.	D
	104 - 211	4
	106 - 211	6
	110 - 211	10

Material: brass

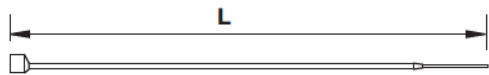
Reinforcing socket for plastic tube



c.-item no	item no.	D	for tube Ø
	104 - 203	2,3	4 x 0,85
	106 - 203	3,5	6 x 1,25
	110 - 203	7	10 x 1,5

Material: brass

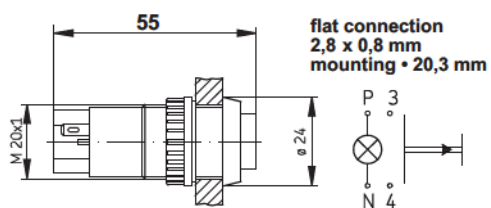
Hose strap



c.-item no	item no.	length x width	packaging unit
	100 - 025	200 x 5,0	100
	100 - 026	300 x 4,6	100
	100 - 027	380 x 4,7	100
	100 - 028	365 x 7,6	100
	100 - 029	780 x 9,0	100

Material: PA 6, black

Illuminated push button



c.-item no	item no.	push button	voltage	capacity
	100 - 290	green	24 V	1,2 W
	100 - 291	green	12 V	1,2 W

Filling pump

Protection cap

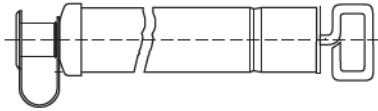


Abb. 1



Bild 1

Cartridge with female thread

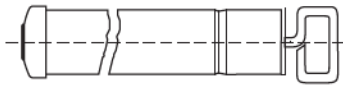


Abb. 2

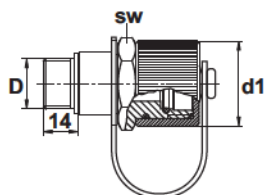


Bild 2

c.-item no	item no.	Bild	Abb.	connection
	100 - 201	1	1	with stub
	100 - 204	2	2	M 26 x 1,5

Din 1284 400 cm³ cartridge
Material: steel, chromed surface

Filling connection

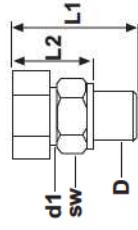


Filling connections for our filling pump, part no. 100 - 201

c.-item no	item no.	D	d1	sw
	100 - 200	M 20 x 1,5	34	32
	100 - 208	M 22 x 1,5	34	32

Material: steel, galvanized surface

Filling connection straight

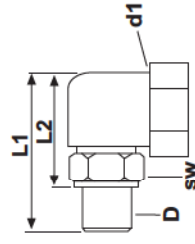


Filling connections for our filling pump, part no. 100 - 204

c.-item no	item no.	L1	L2	D	d1	SW
	100 - 202	38	26	M 22 x 1,5	M 26 x 1,5	27
	100 - 202 - 1	55	43	M 22 x 1,5	M 26 x 1,5	27
	100 - 202 - 2	75	63	M 22 x 1,5	M 26 x 1,5	27
	100 - 207	60	48	M 20 x 1,5	M 26 x 1,5	27

Material: steel, galvanized surface

Filling connection 90°

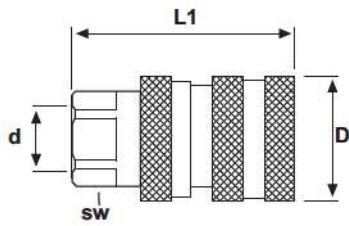


Filling connections for our filling pump, part no. 100 - 204

c.-item no	item no.	L1	L2	D	d1	SW
	100 - 203	71	58	M 22 x 1,5	M 26 x 1,5	27
	100 - 203 - 1	93	81	M 22 x 1,5	M 26 x 1,5	27
	100 - 203 - 2	112	100	M 22 x 1,5	M 26 x 1,5	27
	100 - 203 - 5	99	87	M 20 x 1,5	M 26 x 1,5	27

Material: steel, galvanized surface

Coupling female



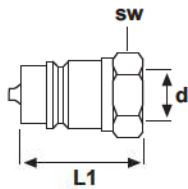
DIN 7241-B Serie



c.-item no	item no.	d	L1	D	sw	operating pressure
	100 - 205 - 1/4	Rp 1/4 BSP	57	28	19	340 Bar
	100 - 205 - 3/8	Rp 3/8 BSP	64	36	23	270 Bar

Material: steel, galvanized surface

Coupling male



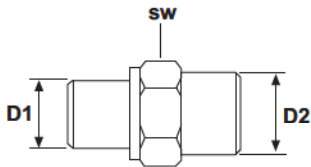
DIN 7241-B Serie



c.-item no	item no.	d	L1	sw	operating pressure
	100 - 206 - 1/4	Rp 1/4 BSP	36	19	340 Bar
	100 - 206 - 3/8	Rp 3/8 BSP	43	21	270 Bar

Material: steel, galvanized surface

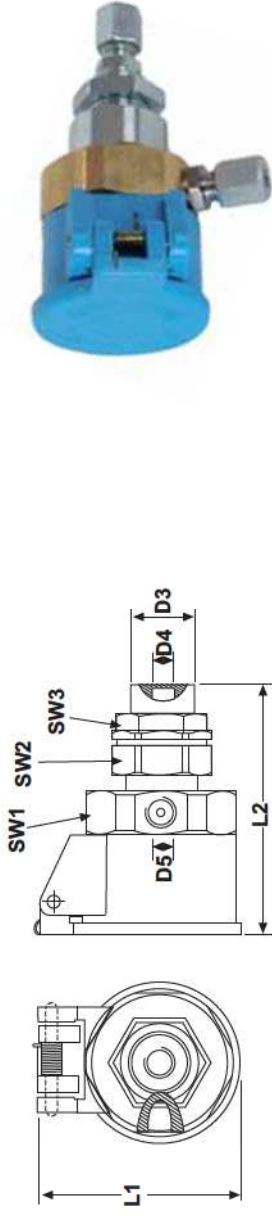
Adapter



c.-item no	item no.	D1	D2	SW
	100 - 209	R 1/4 BSPP	R 1/4 BSPP	17
	100 - 209 - 20 x 1,5	R 1/4 BSPP	M 20 x 1,5	24
	100 - 209 - 22 x 1,5	R 1/4 BSPP	M 22 x 1,5	24

Material: steel, galvanized surface

Coupling socket with return flow port



c.-item no	item no.	L1	L2	SW1	SW2	SW3	D3	D4	D5
	100 - 226	68	84	46	30	27	M 20 x 1,5	M 10 x 1	M 10 x 1

Material: plastic, brass, steel

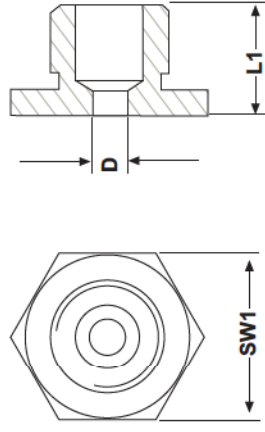
Coupling plug



c.-item no	item no.	L1	D1	D2
	100 - 225	52	55	M 10 x 1

Material: brass, steel

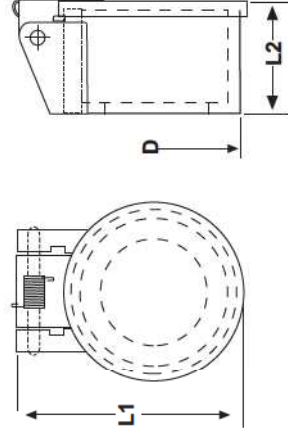
Stub for coupling plug



c.-item no	item no.	SW1	L1	D
	100 - 227	36	24,5	8

Material: steel, galvanized surface

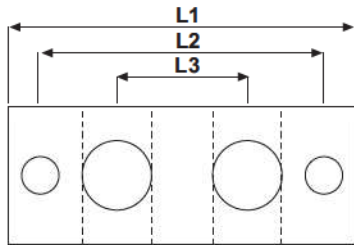
Dust cover for stub



c.-item no	item no.	L1	L2	D
	100 - 228	68	33,5	50

Material: plastic

Junction block T-drilled thread M10x1



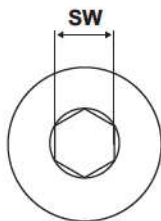
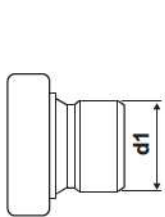
example of application



c.-item no	item no.	number of connections	L1	L2	L3
	100 - 211	1	30		
	100 - 212	2	60	50	22
	100 - 213	3	80	74	22
	100 - 214	4	106	96	22
	100 - 215	5	128	118	22
	100 - 216	6	150	140	22
	100 - 218	8	194	184	22

Material: steel, galvanized surface

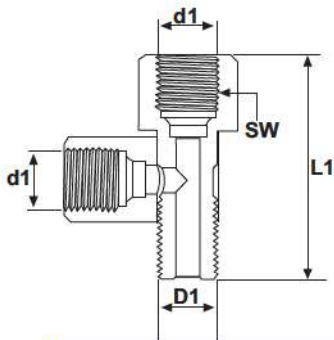
Closure plug



c.-item no	item no.	d1	sw
	100 - 243	M 10 x 1	5
	100 - 243 - SW black	M 10 x 1	5

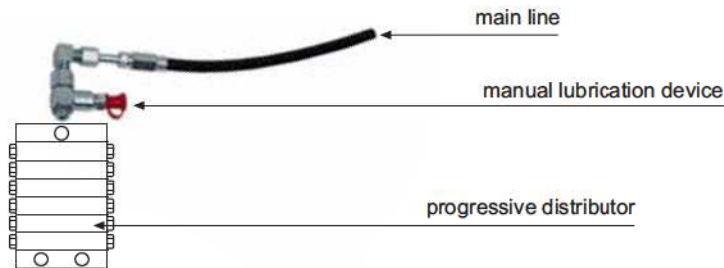
Material: steel, galvanized surface

T-banjo fitting



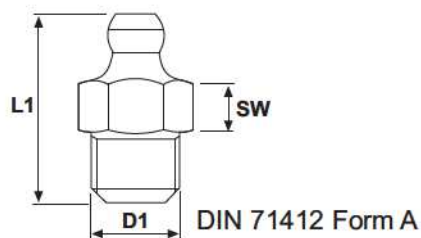
c.-item no	item no.	SW	L1	D1	d1
	100 - 323	14	35	M 10 x 1	M 10 x 1
	100 - 324	14	35	1/8 BSP	1/8 BSP

example of use



Material: 11SMnPb30 + C, galvanized surface

High pressure grease nipple



c.-item no	item no.	SW1	L1	D1
	250 - 003 - RV	11	20,7	M 10 x 1 tap
	250 - 004 - RV	11	20,7	R 1/8 PT

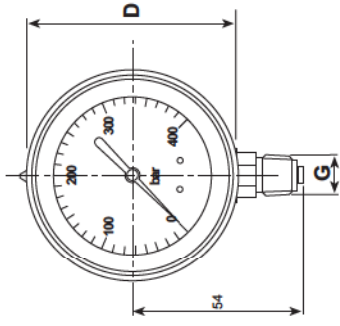
example of use



Material: 11SMnPb30 + C

Material: galvanized surface ISO 4042 A3F

Manometer

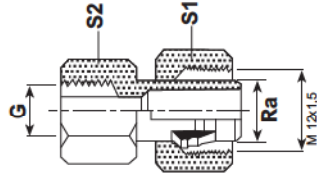


C.-item no	item no.	G	D	Max Bar	Max PSI
	100 - 255	1/4	63	400	6000

Material: Body stainless Steel, brass connection

glycerine filled

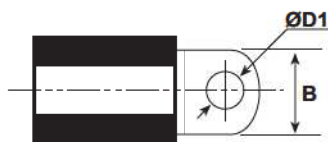
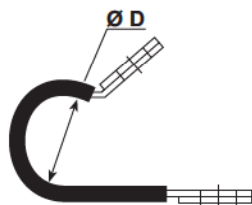
Adjustable screw connection with gasket for manometer



C.-item no	item no.	G	Ra	S1	S2
	106-245-L	1/4 BSP	6 L	14	19

Material: steel, galvanized surface

Rubber lined tube clamp DIN 3016



c.-item no	item no.	Ø D mm	Ø D1 mm	B mm	packaging unit
	100 - 506	6	5,3	12	100
	100 - 509	9	5,3	12	100
	100 - 512	12	5,3	12	100
	100 - 515	15	5,3	12	100
	100 - 518	18	5,3	12	50
	100 - 522	22	5,3	12	50
	100 - 525	25	5,3	12	50
	100 - 606	6	6,4	15	100
	100 - 609	9	6,4	15	100
	100 - 610	10	6,4	15	100
	100 - 612	12	6,4	15	100
	100 - 615	15	6,4	15	100
	100 - 618	18	6,4	15	100
	100 - 620	20	6,4	15	50
	100 - 622	22	6,4	15	50
	100 - 625	25	6,4	15	50
	100 - 629	29	6,4	15	50

Material: steel, galvanized surface, rubber EPDM