

Multi Line System

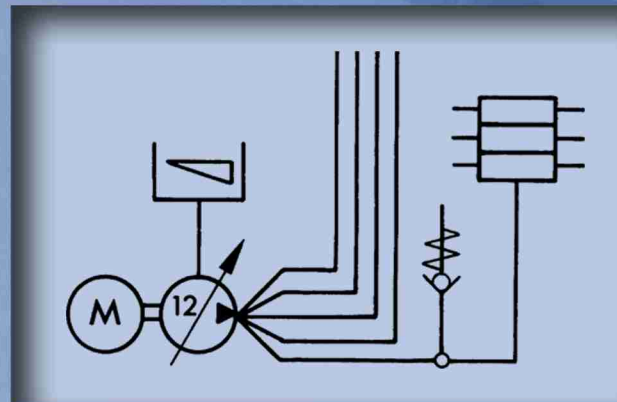
Progressive System

Type	FZ-A
Operating pressure max.	200 bar
Reservoir	2.5 / 8 / 15 / 30 liter
Outlets	1 to 12
Output	0.01 to 0.63 cm ³ /min
Lubricant	Grease to NLGI No. 2

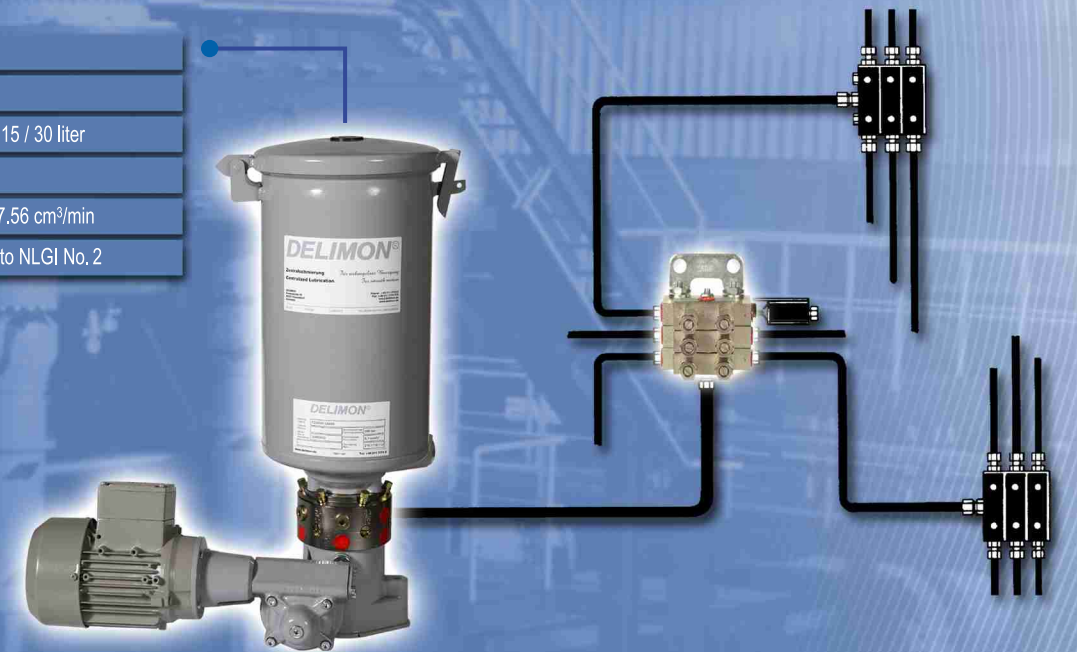


for oil / grease / liquid grease

All lubrication points are connected with the pump via pipelines without the necessity of arranging distributors. Metering of the lubricant for each single friction point takes place directly in the pump. Possibilities of extension and monitoring for the friction points are given by progressive distributors. Suitable for the lubricant supply to lubrication points on equipment.

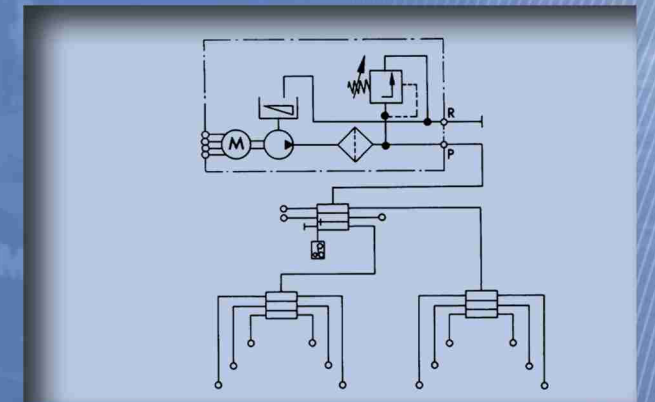


Type	FZ-B
Operating pressure max.	200 bar
Reservoir	2.5 / 8 / 15 / 30 liter
Outlets	1 or 2
Output	0.06 to 7.56 cm ³ /min
Lubricant	Grease to NLGI No. 2

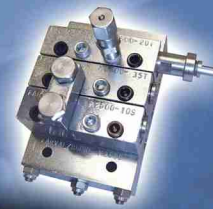


for oil / grease / liquid grease

The pump is connected with the progressive distributor via a lubricant line. The distributors meter the quantity of lubricant, which it receives from the pump, to the connected lubrication points according to the quantity ratios which are to be metered by the distributors and which were preselected on the occasion of the plant design. Progressive systems can be monitored and controlled easily. A combination with other systems and thus also the monitoring of the same is possible in many cases.



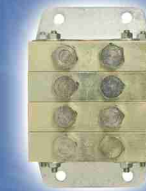
distributor ▶



Type	M2500
Lubricant	oil or grease to NLGI No. 2
Output volume per stroke and outlet	0.08 - 1.31 cm ³
max. pressure	240 bar



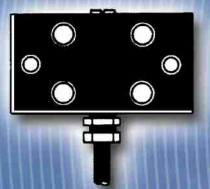
Type	ZP - A/C
Lubricant	oil / grease / liquid grease
Output volume per stroke and outlet	0.1 / 0.2 / 0.3 cm ³
max. pressure	160 bar



Type	ZP - B/D
Lubricant	oil / grease / liquid grease
Output volume per stroke and outlet	0.5 / 1.2 / 2.0 cm ³
max. pressure	300 bar



Type	PVB - block construction
Lubricant	oil / grease / liquid grease
Output volume per stroke and outlet	0.17 cm ³
max. pressure	160 bar



Type	E 4 - block construction
Lubricant	oil / grease / liquid grease
Output volume per stroke and outlet	0.4 cm ³
max. pressure	160 bar