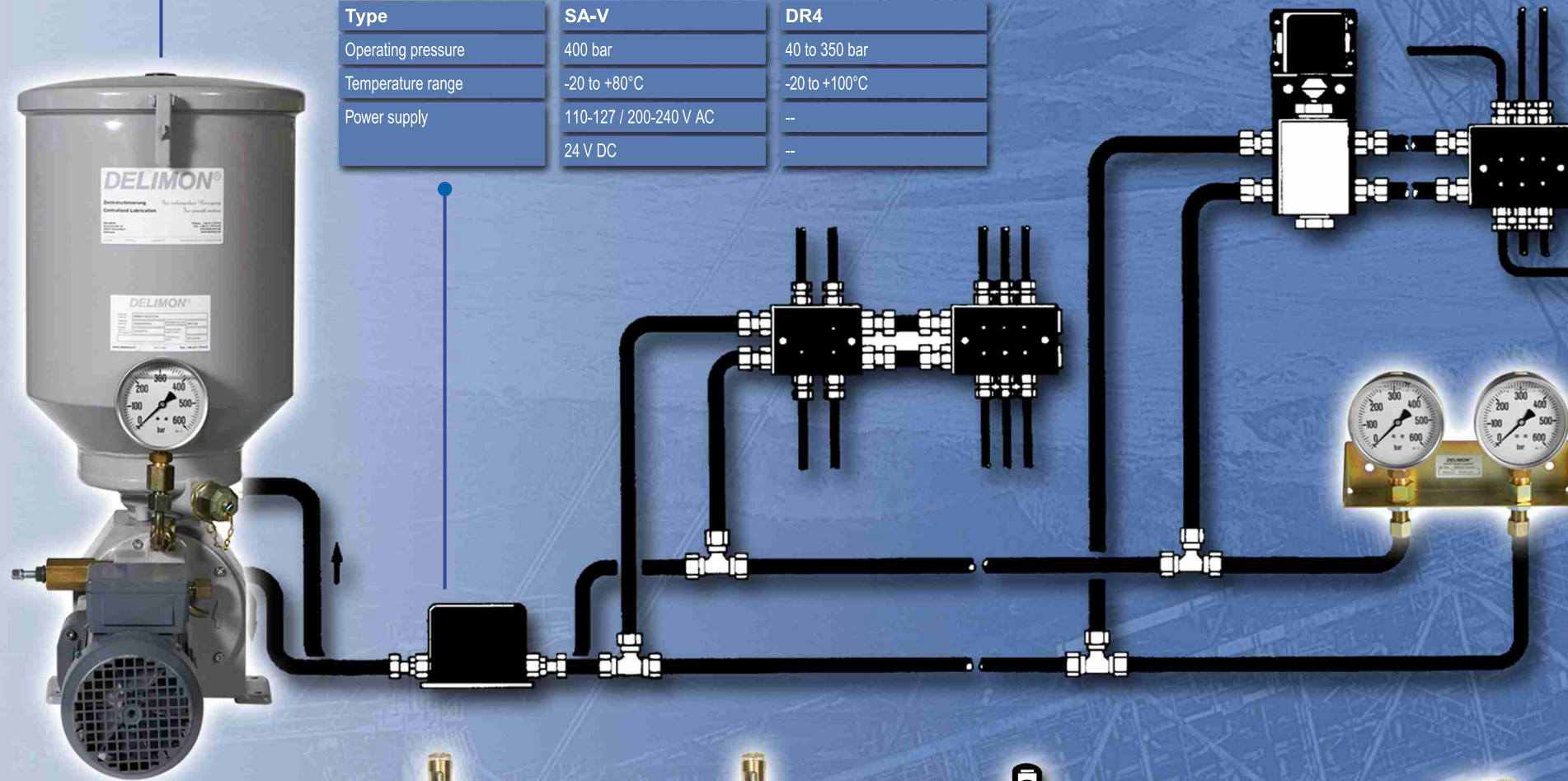


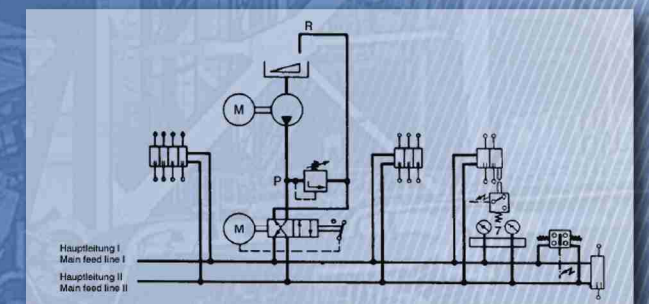
Dual Line System

Type	BM-B	BS-B	DC37	DC42
Operating pressure max.	400 bar	400 bar	310 bar	300 (350) bar
Reservoir	8 / 15 / 30 liter	30 / 60 / 100 liter	15 / 45 kg	45 / 90 kg
Output	2 / 4 l/h	7 / 14 / 22 l/h	9 kg/h	19.2 / 28.8 kg/h
Lubricant	Oil / grease to NLGI No. 3	Oil / grease to NLGI No. 3	Oil / grease to NLGI No. 2	Oil / grease to NLGI No. 2

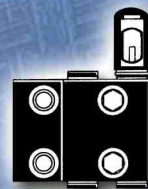
Type	SA-V	DR4
Operating pressure	400 bar	40 to 350 bar
Temperature range	-20 to +80°C	-20 to +100°C
Power supply	110-127 / 200-240 V AC 24 V DC	-- --



Pressure and return line are connected with the change-over valve. Via this electrically or hydraulically driven change-over valve, two mainline pipes are connected alternately with the feed and return line of the pump. All distributor elements are connected with the two main line pipes. For a more precise distribution it is possible to install additional progressive divider after each dual line divider outlet. The pressure change is released by means of a differential pressure switching device at the line end. After one pressure change had taken place in the two main line pipes, the lubrication points have been supplied with lubricant. Excellently suited for all applications, particularly for hard operating conditions and large plants.



distributor ▶



Type	DDM	SDM	ZV-B – flange distributor	DDJ	DM	ZV-B	ZV-C
Lubricant	oil or grease (max. NLGI No. 3)	oil or grease (max. NLGI No. 3)	oil / grease / liquid grease	oil or grease (max. NLGI No. 3)	oil or grease (max. NLGI No. 3)	oil / grease / liquid grease	oil / grease / liquid grease
Output volume per stroke and outlet	0.1 - 1.0 cm ³ (DDM 1) 0.5 - 5.0 cm ³ (DDM 5) 3.0 - 15.0 cm ³ (DDM 15)	0.2 - 2.0 cm ³ (SDM 1) 1.0 - 10.0 cm ³ (SDM 5) 6.0 - 30.0 cm ³ (SDM 15)	1.5 - 3.0 cm ³ optionally adjustable	0.13 - 0.6 cm ³	0.2 - 1.2 cm ³ 0.6 - 2.25 cm ³ 1.2 - 5.1 cm ³ 3.0 - 14.25 cm ³ 6.0 - 28.5 cm ³	0.5 - 1.5 - 3.0 cm ³ optionally adjustable	15.0 cm ³ adjustable
max. pressure	350 bar	350 bar	400 bar	350 bar	350 bar	400 bar	400 bar