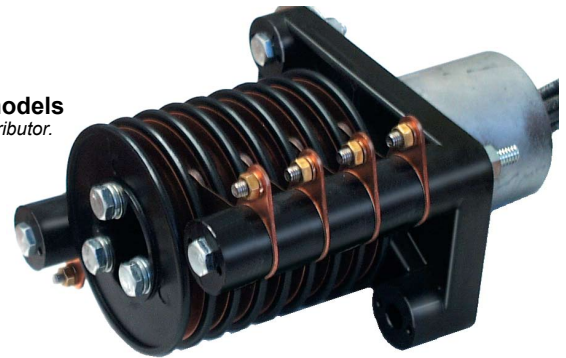




Compact, 600-Volt Slip Rings

SERIES "DR" FEATURES

- Fits most standard applications
- Mounts in minimum space
- Mounts vertical or horizontal
- Nylatron/Durez bearings
- Lead wires connect to slip ring lead wires at junction box, NOT at the slip ring or inside the mounting shaft.
- Available in 2 through 10 pole models
Special models available – contact your distributor.
- Rotation speeds to 40 rpm
- 600 Volt rating



HOW TO SELECT A SLIP RING:

Electrical considerations:

STEP ⌚ Select a 30- or 55-amp slip ring model from the charts below. The model you choose should have the same number of poles as the number of circuits you are connecting, including ground. Standard slip rings are rated at 600 volts.

Physical requirements:

STEP ○ Check your clearance requirements against dimensional data below. Note that your mounting shaft must be no larger than 1.50" O.D. in order to connect with the slip ring drive collar. See dimensional data and diagram below.

30 Amp Slip Rings

| Slip Ring Model No. | No. Poles | Length (A) Slip Ring in. (mm) | AWG Lead* |
|---------------------|-----------|-------------------------------|-----------|
| DR030-02 | 2 | 4.9 (124) | #12 |
| DR030-04 | 4 | 5.9 (150) | #12 |
| DR030-06 | 6 | 6.6 (168) | #12 |
| DR030-08 | 8 | 7.4 (188) | #12 |
| DR030-10 | 10 | 8.1 (206) | #12 |
| DR030-12 | 12 | 8.8 (224) | #12 |

