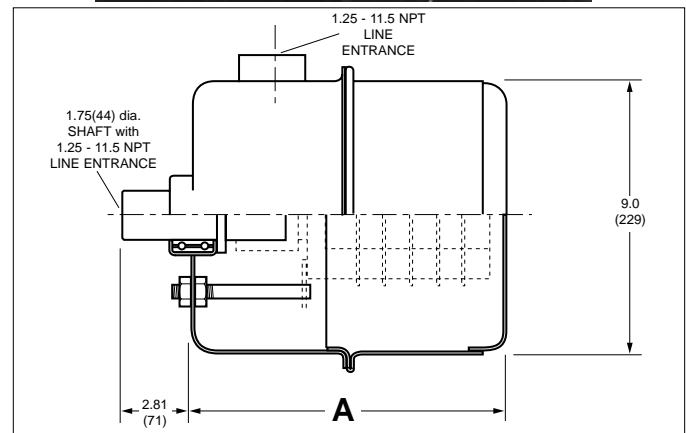
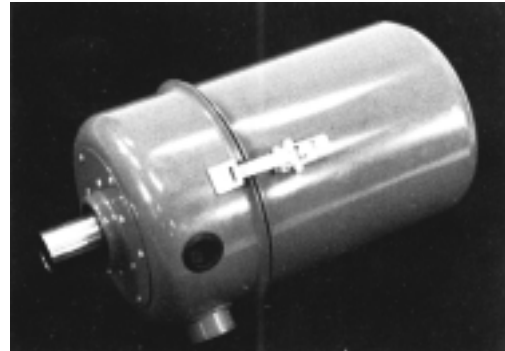


SLIP-RINGS IN ENCLOSURES

COMPACT or ROTA-POWER™ Slip-Ring plus Enclosure

- **WEATHERTIGHT HOUSING:** Easy to access
Gleason Slip-Ring Enclosures are watertight and dust-tight. Sealed design keeps all but the most minute particles away from the working slip-ring.
- **RUGGED CONSTRUCTION:** All enclosures are manufactured from medium gauge steel and are custom fit to each slip-ring size. Main shafts are mounted to enclosure on double ball bearings (for support of slip-ring assembly and enclosure only).
- **WEATHERPROOF FINISH:** Gleason Slip-Ring Enclosures feature a baked-on polyester finish for maximum durability in harsh condition. Finish exceeds even zinc plating. Custom colors and finishes are available—contact Gleason Reel for details.
- **HEATERS:** For outdoor applications where machinery is not operating for extended periods of time or where low temperatures are common, we recommend the installation of a strip heater. Condensation can build up during shut-down periods causing the slip-ring assembly to require frequent service. The strip heater eliminates this condensation on a continuous basis increasing the service life of your Gleason Reel Slip-Ring assembly.



COMPACT MODELS

Model Number	Number Poles	Amps*	Assembled Length (A) in. (mm)
ECR30-02	2	30	8.88 (226)
ECR30-04	4	30	8.88 (226)
ECR30-06	6	30	8.88 (226)
ECR30-08	8	30	10.63 (270)
ECR30-10	10	30	10.63 (270)
ECR30-12	12	30	12.38 (315)
ECR30-14	14	30	12.38 (315)
ECR30-16	16	30	14.88 (378)
ECR30-18	18	30	14.88 (378)
ECR30-20	20	30	14.88 (378)
ECR55-02	2	55	8.88 (226)
ECR55-04	4	55	10.63 (270)
ECR55-06	6	55	12.38 (315)
ECR75-04	4	75	8.88 (226)

* Unless otherwise specified, standard assemblies are supplied with lead wires as indicated, derated per lead wire limits and per number of poles (see page 4). If larger or mixed lead wires are required or for high-temp use (<200°C), please contact us.

ROTA-POWER™ MODELS

Model Number	Number Poles	Amps*	Assembled Length (A) in. (mm)
ERP35-02	2	35	12.00 (305)
ERP35-03	3	35	12.00 (305)
ERP35-04	4	35	12.00 (305)
ERP35-06	6	35	14.50 (369)
ERP35-08	8	35	14.50 (369)
ERP35-10	10	35	17.00 (432)
ERP35-12	12	35	17.00 (432)
ERP35-14	14	35	19.50 (496)
ERP35-16	16	35	19.50 (496)
ERP35-20	20	35	24.50 (623)
ERP35-24	24	35	24.50 (623)
ERP35-30	30	35	32.50 (826)
ERP35-36	36	35	32.50 (826)
ERP75-02	2	75	14.50 (369)
ERP75-03	3	75	14.50 (369)
ERP75-04	4	75	14.50 (369)
ERP125-2	2	125	14.50 (369)
ERP125-3	3	125	17.00 (432)
ERP125-4	4	125	17.00 (432)
ERP200-2	2	200	12.00 (305)
ERP200-3	3	200	14.50 (369)
ERP200-4	4	200	14.50 (369)

* Unless otherwise specified, standard assemblies are supplied with lead wires as indicated, derated per lead wire limits and per number of poles (see page 4). If larger or mixed lead wires are required or for high-temp use (<200°C), please contact us.